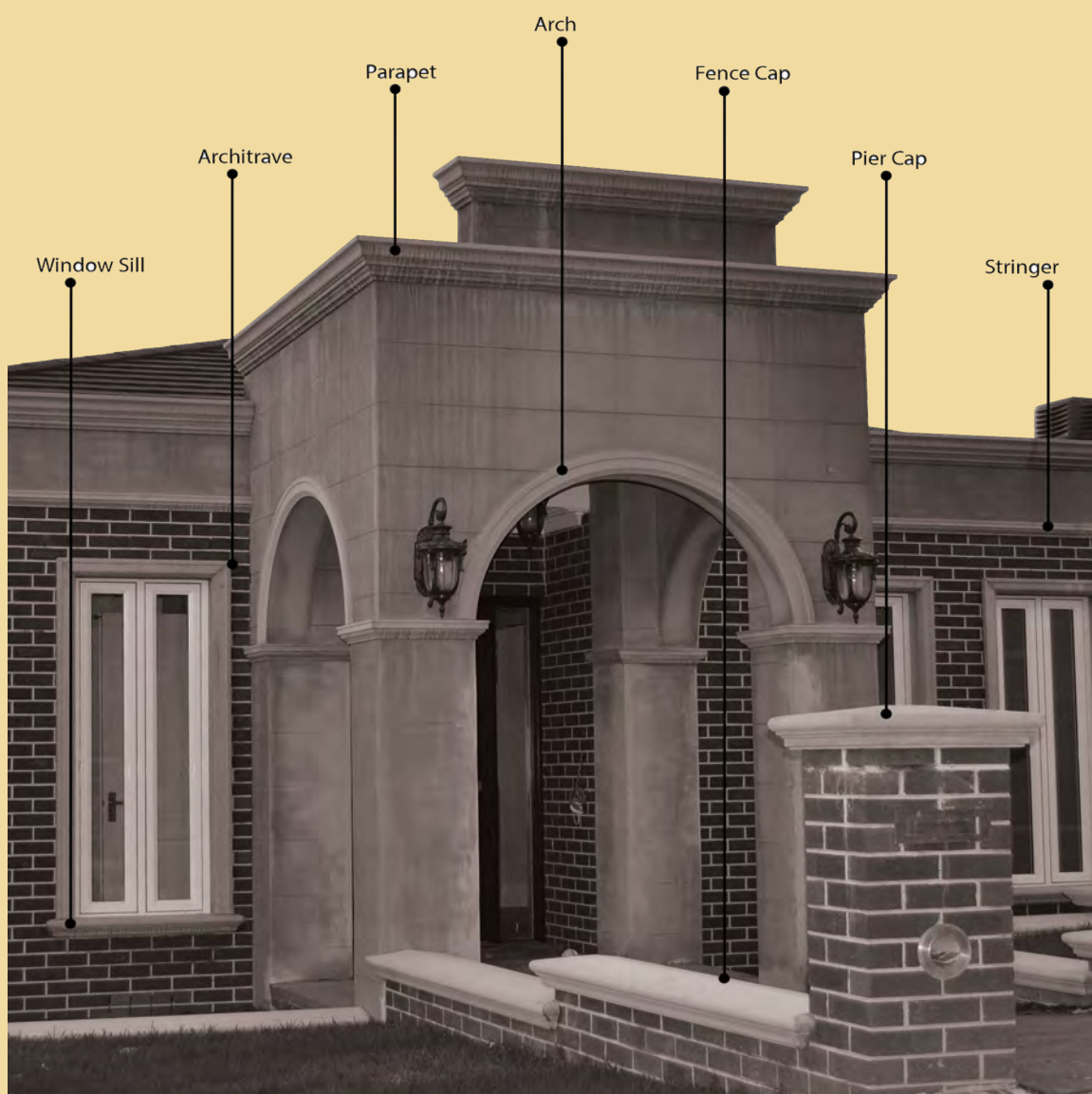


NP

Northern Plasterboard

External Mouldings



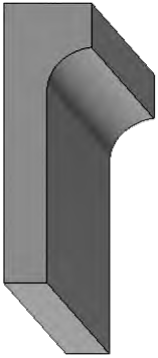
Special designs and profiles can also be manufactured to your requirements.

All products are Australian made.

Architraves

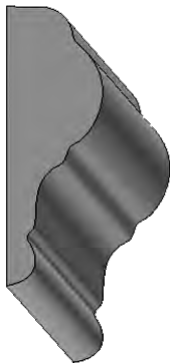
Standard lengths are 2.4 or 3 metres

AM3001



W 100 mm
D 40 mm

AM3002



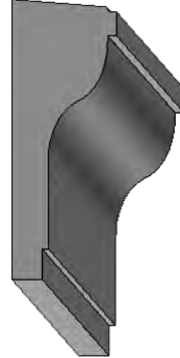
W 90 mm
D 30 mm

AM3003



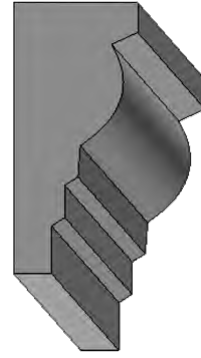
W 90 mm
D 30 mm

AM3004



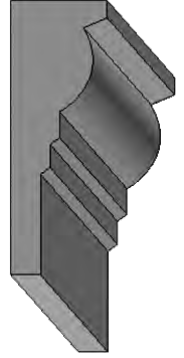
W 120 mm
D 45 mm

AM3005



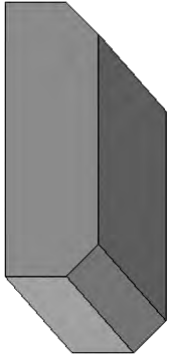
W 102 mm
D 43 mm

AM3006



W 130 mm
D 45 mm

AM3007



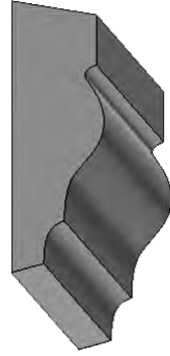
W 85 mm
D 30 mm

AM3008



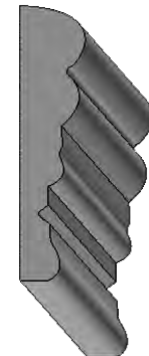
W 90 mm
D 25 mm

AM3009



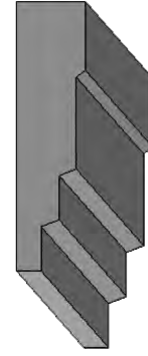
W 92 mm
D 30 mm

AM3010



W 125 mm
D 28 mm

AM3011

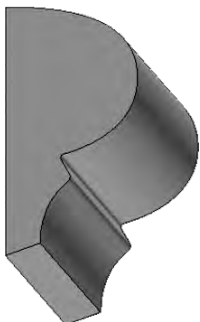


W 100 mm
D 30 mm

Stringers

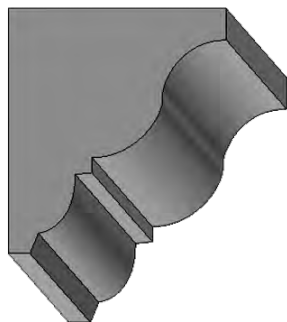
Standard lengths are 2.4 or 3 metres

SM2001



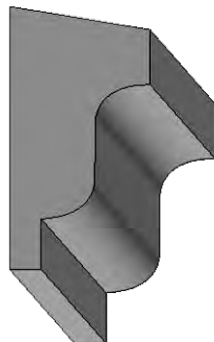
W 90 mm
D 48 mm

SM2002



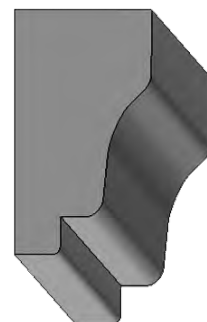
W 95 mm
D 85 mm

SM2003



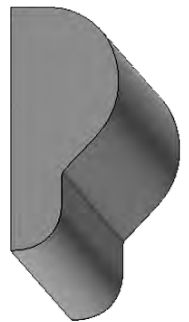
W 75 mm
D 40 mm

SM2004



W 72 mm
D 38 mm

SM2005

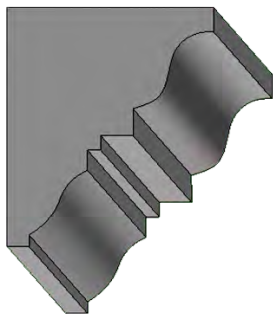


W 70 mm
D 30 mm

Parapets

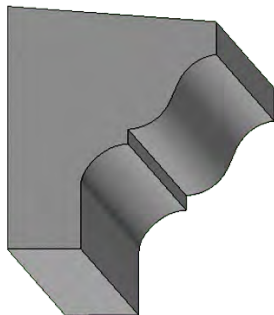
Standard lengths are 2.4 or 3 metres

PM1001



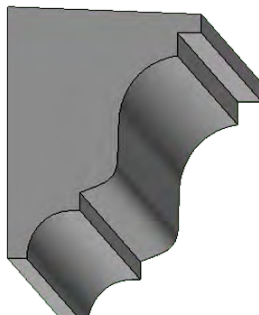
H 200 mm
D 170 mm

PM1002



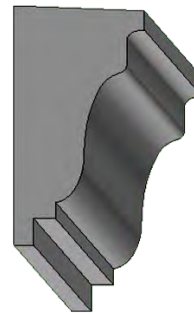
H 140 mm
D 120 mm

PM1003



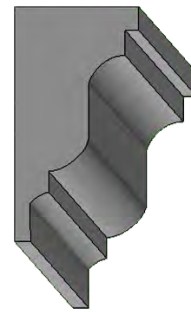
H 197 mm
D 150 mm

PM1004



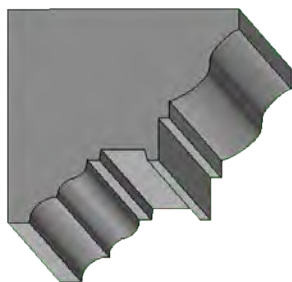
H 170 mm
D 95 mm

PM1005



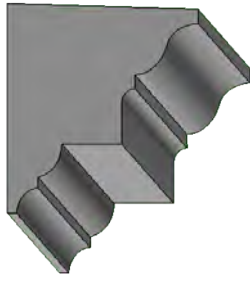
H 263 mm
D 145 mm

PM1006



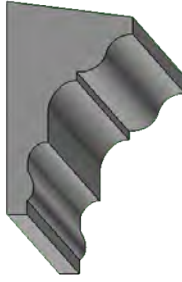
H 217 mm
D 200 mm

PM1007



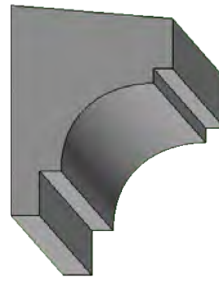
W 165 mm
D 150 mm

PM1008



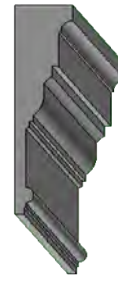
W 205 mm
D 120 mm

PM1009



W 210 mm
D 160 mm

PM1010



W 295 mm
D 80 mm

PM1011

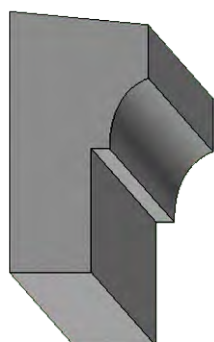


W 215 mm
D 77 mm

Window Sills

Standard lengths are 2.4 or 3 metres
also made to size with return end mitres

WSM4001



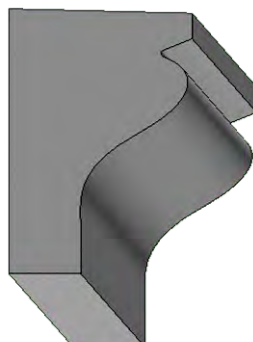
H 150 mm
D 80 mm

WSM4002



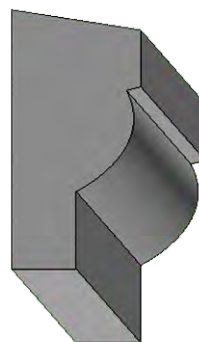
H 120 mm
D 55 mm

WSM4003



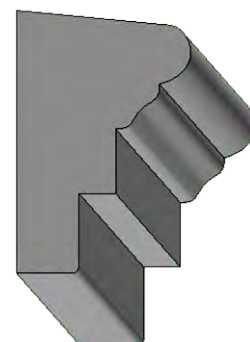
H 130 mm
D 90 mm

WSM4004



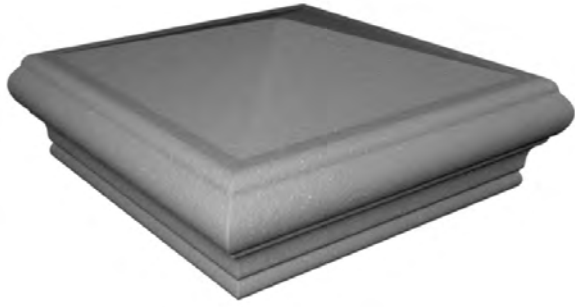
H 120 mm
D 60 mm

WSM4005



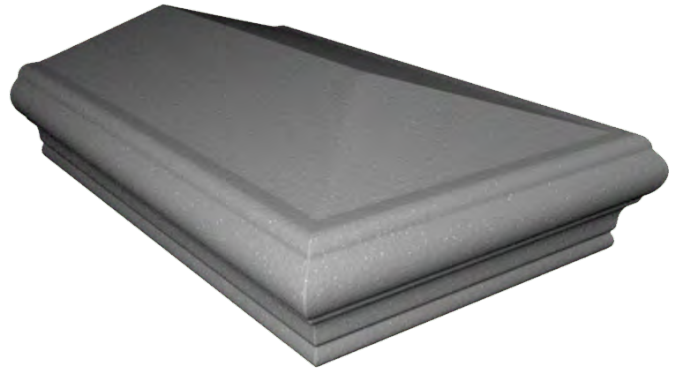
H 135 mm
D 90 mm

Pier Caps



Pier caps can be made in 370mm x 370mm rebate and 490mm x 490mm rebate.

Fence Caps



Fence caps are available in 120mm rebate x 2.4 or 3 metre lengths.

Arch Moulds



Sweeps



Quoin

QM01



Patten repeat
300mm

H 2700 mm
W 400mm

**Most of our Corbels,
Caps & Keystones in
our plaster range can
also be manufactured in
Light Weight Concrete.**

**Also reproductions of
your moulding that is
no longer available can
be recreated from your
original by our
craftsmen.**

KSM01



H 185 mm
W 155 mm
D 70 mm

KSM02



H 204 mm
W 170 mm
D 60 mm